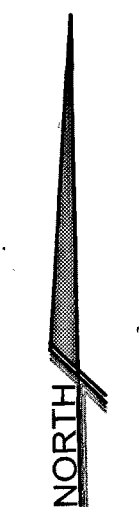
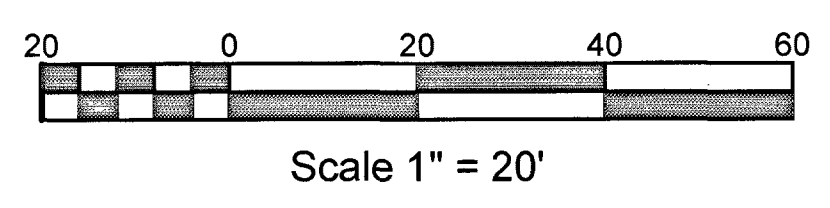


# GRIFFINTOWN TWO

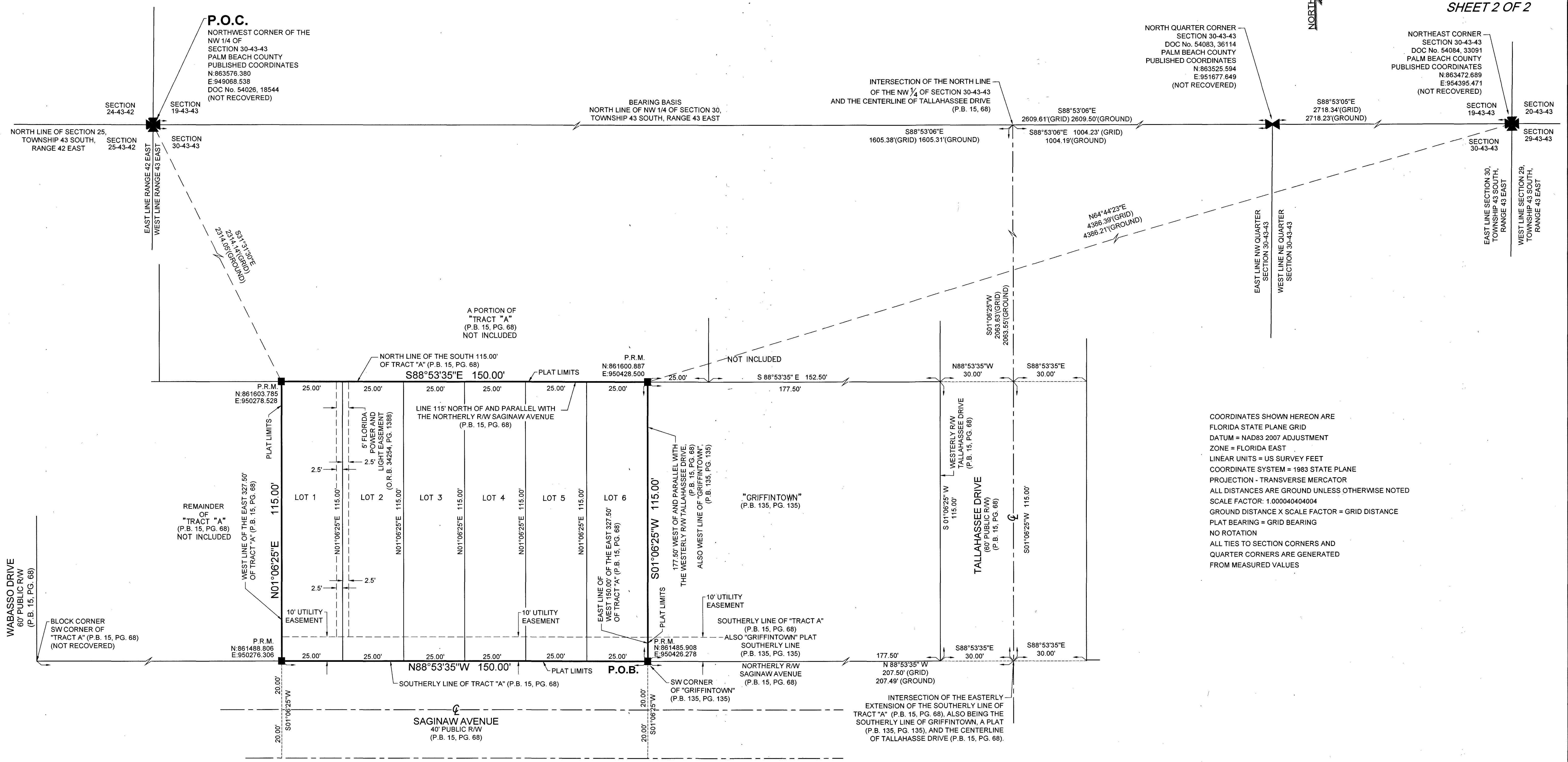
BEING A REPLAT OF A PORTION OF TRACT A, OF HENNESSEY'S REPLAT, OF BLOCK 44, AND PART OF BLOCKS 45 AND 50, WEST GATE ESTATES, ACCORDING TO THE PLAT THEREOF, AS RECORDED IN PLAT BOOK 15, PAGE 68, PUBLIC RECORDS OF PALM BEACH COUNTY, FLORIDA, LYING IN SECTION 30, TOWNSHIP 43 SOUTH, RANGE 43 EAST, PALM BEACH COUNTY, FLORIDA.

# 23

SHEET 2 OF 2



SHEET 2 OF 2



COORDINATES SHOWN HEREON ARE  
FLORIDA STATE PLANE GRID  
DATUM = NAD83 2007 ADJUSTMENT  
ZONE = FLORIDA EAST  
LINEAR UNITS = US SURVEY FEET  
COORDINATE SYSTEM = 1983 STATE PLANE  
PROJECTION - TRANSVERSE MERCATOR  
ALL DISTANCES ARE GROUND UNLESS OTHERWISE NOTED  
SCALE FACTOR: 1.000040404004  
GROUND DISTANCE X SCALE FACTOR = GRID DISTANCE  
PLAT BEARING = GRID BEARING  
NO ROTATION  
ALL TIES TO SECTION CORNERS AND  
QUARTER CORNERS ARE GENERATED  
FROM MEASURED VALUES

**LEGEND:**

⊙ = SET P.C.P. 'P.K.' NAIL & DISC STAMPED 'M.L.S.' LB # 6838"	C.M. = CONCRETE MONUMENT (D) = DEED D.B. = DEED BOOK D.E. = DRAINAGE EASEMENT EASE. = EASEMENT F.D. = FOUND L = ARC LENGTH L.A.E. = LIMITED ACCESS EASEMENT	L.W.D.D. = LAKE WORTH DRAINAGE DISTRICT (M) = MEASURED O.R.B. = OFFICIAL RECORD BOOK P.B. = PLAT BOOK P.B.C. = PALM BEACH COUNTY P.C. = PAGE P.C.N. = PROPERTY CONTROL NUMBER P.O.B. = POINT OF BEGINNING	P.O.C. = POINT OF COMMENCEMENT P.R.M. = PERMANENT REFERENCE MONUMENT R = RADIUS R.W. = RIGHT OF WAY U.E. = UTILITY EASEMENT
--	--	--	---

PREPARING SURVEYOR & MAPPER'S STATEMENT  
THIS INSTRUMENT WAS PREPARED BY MICHAEL J. MILLER, P.S.M. 4034  
IN THE OFFICE OF MILLER LAND SURVEYING, 1121 LAKE AVE., LAKE WORTH, FL 33460

SCALE: 1" = 20'	<b>MILLER LAND SURVEYING</b> 1121 LAKE AVENUE LAKE WORTH, FLORIDA 33460 PHONE: (561) 586-2669 - FAX: (561) 582-0151 www.millersurveying.com e-mail: orders@millersurveying.com	REF: T44/20
DRAWN BY: S.R.L.		PREV. JOB NO'S:
FIELD W/C: J.W./B.M.		JOB NO: Y221110
DATE: 01/20/2023		L-2353-A